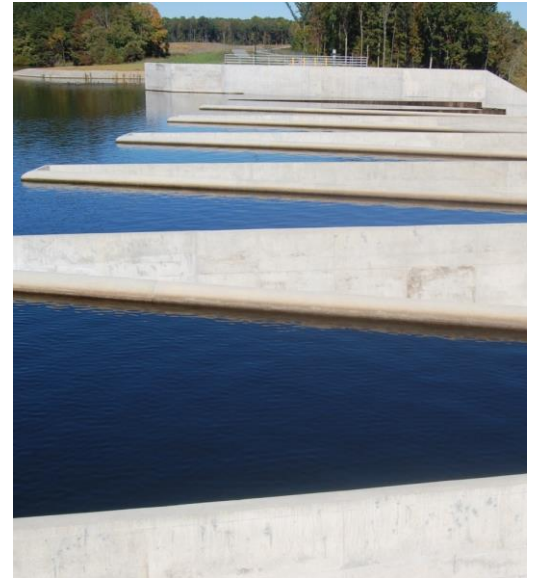


WALTON CO WATER & SEWERAGE AUTHORITY  
HARD LABOR CREEK DAM  
SOCIAL CIRCLE, GEORGIA



## Project Description

Reynolds (formerly operating as Layne Heavy Civil, Inc.) constructed a 120' earthen dam to contain a 1,600 acre reservoir which stores water for the surrounding counties.

The reservoir serves as the source for a future water plant. The construction included a 130' wide concrete chute spillway that includes walls 40' tall. The excavation of the chute spillway was completed via blasting the 50' plus feet of rock. The poured concrete for the project was in excess of 14,000 yards.

The total clearing for the reservoir was in excess of 1,300 acres. The Principle Spillway included 900' of 72" pre-stressed concrete cylinder pipe.

## At a Glance

**Contract Amount:**  
\$17.2 M

**Notice to Proceed:**  
September 3, 2013

**Completion Date:**  
August 9, 2015

**Owner**  
Walton County Water &  
Sewerage Authority

**Engineer:**  
Schnabel Engineering