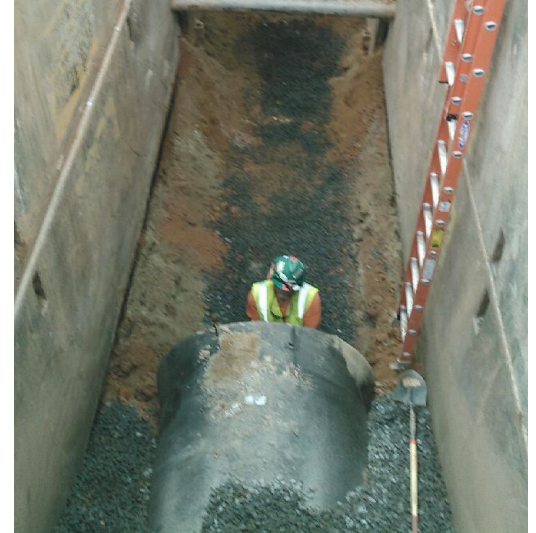


COBB COUNTY-MARIETTA WATER AUTHORITY  
SW CONNECTOR 54" WM-EAST COBB PHASE  
MARIETTA, GEORGIA



## Project Description

The water main is over six miles in length and begins near the James E. Quarles Water Treatment Plant on Lower Roswell Road and terminates near the intersection of Terrell Mill Road and Cobb Parkway. The Southwest Connector water mains replaced an aging pipe system of 20", 24" and 30" diameter concrete pipe. The new 54" diameter ductile iron pipe increased reliability by allowing the Quarles Water Treatment Plant to deliver more water at lower pressures, thereby reducing operating costs and potential for water main breaks. This new water main provides adequate water supply to Cobb County residents and neighboring customers for decades. Phase 1 included installation of 10,000 LF 54" DIP water main, connection to existing 54" water main, 3 connections to existing water distribution mains for Cobb County Water System, 1 connection to existing water distribution mains for City of Marietta, four jack and bore steel casing installations, 3 open-cut steel casing installation, removal of existing 20", 24", and 30" PCCP. Phase 2 includes installation of 22,340 LF 54" DIP water main, 54" connection at Canton Road, connections of existing 30", 42", and 54" water main, 2 connections to existing water distribution mains for the Cobb County Water System, 1 connection to existing water distribution for City of Marietta, Sope Creek aerial crossing, removal of 20", 24", and 30" PCCP.

## At a Glance

Contract Amount:  
\$42.6M

Notice to Proceed:  
August 6, 2015

Completion Date:  
Phase 1: November 10, 2016  
Phase 2: December 31, 2017

Owner:  
Cobb County – Marietta Water  
Authority

Engineer:  
Arcadis